



Restaurant / Direct Sales

Kishu Katsuura

Japan’s number one for freshly caught tuna

Tuna Map



KISHU KATSUURA TUNA MAP

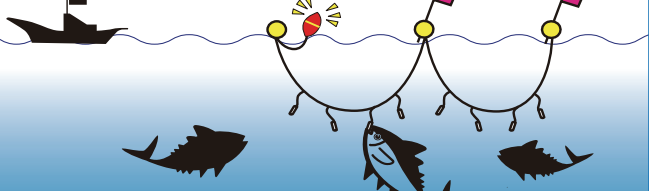
Nachikatsuura, Wakayama Prefecture

Bindama



What are Bindama?
Bindama are used as floats for the longline fishing and symbolise this environmentally sustainable fishing method.
Currently, the glass Bindama floats have been changed to plastic, however, the glass beads are still displayed as objects d'art around the fishing port, in the shopping district, and along the 'Bindama Street'. These Bindama serve as symbols of the Katsuura Fishing Port, which boasts the "largest catch of fresh tuna in Japan".

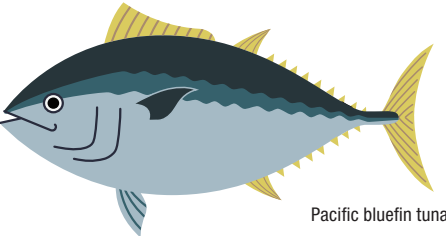
Longline Fishing



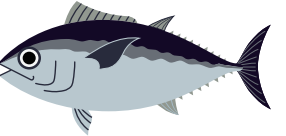
What is "Longline Fishing"?
This is a fishing method developed in Japan. This method utilises fishing gear with a single main trunk rope to which branch ropes with needles are attached at regular intervals. The length of the trunk rope may vary from several hundred meters to several hundred kilometers. By adjusting the size of the fish used as bait, it is possible to select fully grown catch rather than younger fish. For this reason, longline fishing method contributes to the sustainability of tuna resources.



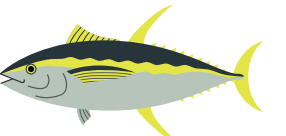
Nachikatsuura Tourism Organization Instagram



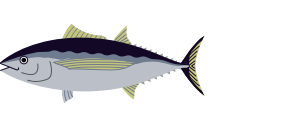
Pacific bluefin tuna



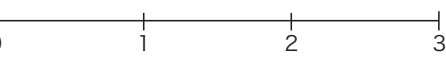
Bigeye tuna



Yellowfin tuna



Albacore tuna



Access to Nachi-Katsuura Town

By JR Train Line

○ Kyoto — Shin Osaka — Tennoji — Kii-Katsuura
○ Nagoya — Kii-Katsuura

Approx. 4 hours from Kyoto on the express "Kuroshio"
Approx. 3 hours 50 mins from Shin Osaka on the express "Kuroshio"
Approx. 3 hours 30 mins on the express "Nanki"

By car

○ Osaka — Hanshin Expressway — Matsubara JCT — Nishi Meihan Expressway — Koriyama IC — R24/169 — Yoshino — R169/R309 — Kumano — R42 — Nachi-katsuura (Approx. 4 hours 30 minutes)
○ Nagoya — Higashi Meihan Expressway — Seki JCT — Ise Expressway — Seiwake-taki JCT — Kisei Expressway • Kumano-Owase Road — Kumano-Odomari IC — R42 — Shingu — R42 — Nachi-katsuura (Approx. 4 hours)

By bus

Mie Kotsu Group (Shingu Sales Office) TEL 0735-22-5268

By plane

○ Haneda Airport — Japan Airlines (Approx. 1 hour 10 minutes) — Nanki-Shirahama Airport — Fixed-route bus — Shirahama — JR — JR Kii-Katsuura Sta. (Approx. 4 - 5 hours)
Limousine bus — JR Kii-Katsuura Sta. (Approx. 4 hours)
Departing from the airport at 9:30 / 18:25.



Katsuura port Nigiwai Ichiba Market

Within the facility, a tuna filleting show will be performed using fish caught in Katsuura port, as well as the sale of fresh fish. You can enjoy eating and drinking while viewing Katsuura port.

Live performance! Tuna cutting show!

5 minutes walk from JR Kii-Katsuura Sta.
5 minutes walk from the bus terminal

Business hours 8:00-16:00 (last order for food and drink booth is 15:30)
Closed: Tuesdays Capacity (people): 80
TEL 0735-29-3500

Various inquiries

Taxi
Crystal Taxi (Katsuura Branch)
0735-52-0444
Kumano Daiichi Kotsu (Katsuura Branch)
0735-52-2525

Fixed-route bus/Regular sightseeing bus
Kumano Gobo Nankai Bus (Katsuura Branch)
0735-52-0028

Accommodations guide
Nanki Katsuura Onsen Ryokan Association
0735-52-0048

Nachikatsuura Tourism Organization

TEL 0735-52-5311

Tsukiji 6-1-4 Nachikatsuura, Higashimuro District, Wakayama Prefecture 649-5335

Number one for freshly caught tuna KISHU KATSUURA

Tuna Map

Restaurant information TUNA FISH

Only dishes that are exclusive of tax are displayed as (excl. of tax)

RESTAURANT INFORMATION



Credit cards



Mobile payment



Wheelchairs



English menu

*Please inquire to the store for details

PREMIUM QUALITY



1 bodai

Tsukiji 5-1-3
0735-52-0039



Tuna Chuturo cutlet set 1,500 yen (single item 1,400 yen)

(Opening hours) 11:00-14:00 (Last order: 30 mins before)
17:00-21:30 (Last order: 30 mins before)
(Closed) Tue/irregular (Parking) 3 vehicles



A variety of creative Japanese dishes prepared with sincerity by experts, including fresh seafood such as raw tuna, local vegetables, and locally brewed sake. Seasonal dish is available.

[Recommended menu]

BarachirashidonDX 1,980 yen
Filling and luxurious Seafood rice bowl 2,000 yen
Whale Tatsutaage set 1,500 yen

2 Yamaga

Tsukiji 5-2-6
0735-52-3117



Mixed Rice Bowl 1,600 yen

(Opening hours) 11:00-19:00
(Closed) Irregular
(Parking) None



A luxurious rice bowl topped with a number of different tuna cuts, including naka-ochi (tuna meat that was spooned from the bone), chu-toro (medium-fatty tuna), and negi-toro (minced tuna).

[Recommended menu]

Honmamon tuna rice bowl 980 yen
Yama-kake (tuna fish with grated Japanese yam) rice bowl 1,400 yen
Whale sashimi 2,000 yen

3 Senryuu

Tsukiji 4-3-27
0735-52-0860



Tekkadon Rice Bowl 1,320 yen

(Opening hours) 8:00-16:00
(Closed) Irregular
(Parking) None



Delicious rice bowl laid with heaps of raw tuna freshly caught in Katsura port.

[Recommended menu]

Sashimi set 1,650 yen
Senryuu set 2,200 yen

4 Café Amaai

Tsukiji 5-2-10
0735-52-0181



Tuna and ground meat cutlet with tomato tartar sauce (with free drink at lunchtime) 1,000 yen

(Opening hours) 11:30-17:00, 19:00-22:00 (Closed) Wed, 1st Thur of month, irregular
(Parking) 2 vehicles



Café where you can enjoy espresso-based drinks. We also serve meals.

[Recommended menu]

Gâteaux chocolate 650 yen
Burnt Basque Cheesecake 650 yen

5 kitchen nicori

Tsukiji 5-2-33
0735-30-4435



Nachikatsu pizza 1,100 yen

(Opening hours) From 18:00
(Closed) Sun/Mon
(Parking) 2 vehicles



GOOD PIZZA GOOD PASTA
GOOD TACOS GOOD SALAD
GOOD BEER GOOD DOLCE
GOOD MUSIC DINNER

6 Masudaya

Tsukiji 5-2-14
0735-52-7466



Yokubari (greedy) set 1,650 yen

(Opening hours) 11:00-14:00 17:00-21:00
(Closed) Irregular
(Parking) 3 vehicles



Set meal with our recommended sashimi, shumai, bite-sized cutlets, and salty sauce. Comes with a different small side dish that changes on a daily basis.

[Recommended menu]

Tuna spring rolls 1,100 yen
Tuna shumai 680 yen
Japanese-style tuna steak 1,550 yen

7 Takehara

Tsukiji 4-3-23
0735-52-1134



Famous Tuna Set 1,650 yen

(Opening hours) 11:00-14:00, 17:00-21:00
(Closed) Irregular, end/start of year, Sunday 14:00
(Parking) 8 vehicles



Lean and fatty tuna combine on top of the rice to create a dish that can never be forgotten once tasted. We also recommend tuna gizzards. No smoking in any room. Counter seats only.

[Recommended menu]

Chikoro (heart), Wata (stomach) tail fins, mako (eggs) 660 yen
Eyeballs 880 yen

8 Taiheiyo Hinodemaru

Tsukiji 4-4-1
0735-52-0606



Raw tuna Yukhoe rice bowl 1,900 yen

(Opening hours) 7:00-13:30, 17:00-21:00 (last order 20:40)
(Closed) Mon, Irregular
(Parking) 3 vehicles



We use fresh, springy raw tuna caught at the port of Katsura, as well as offering a wide range of other izakaya menu items. This dish is very voluminous so we hope you enjoy it.

[Recommended menu]

Raw tuna sashimi set
Raw tuna rice bowl, Negi-toro (minced tuna) rice bowl, Whitebait rice bowl, Whale Tatsutaage

9 Iroha Sushi

Tsukiji 4-4-5
0735-52-0760



Seafood Rice Bowl 1,320 yen

(Opening hours) 11:30-13:00 17:00-22:00
(Closed) Wednesday
(Parking) None



We deal with fresh tuna from nearby coastal waters, as well as tuna stomach and whale. We specify our prices clearly so you can order with full peace of mind.

[Recommended menu]

Tuna stomach cooked with butter 660 yen
Dolphin sashimi 1,320 yen
Deluxe sushi 1,870 yen

10 Oden-to-Heiwa No. 9

Tsukiji 4-4-5
080-6915-9200



Fresh tuna negima hot pot 1,750 yen

(Opening hours) 17:00-24:00
(Closed) Irregular
(Parking) None



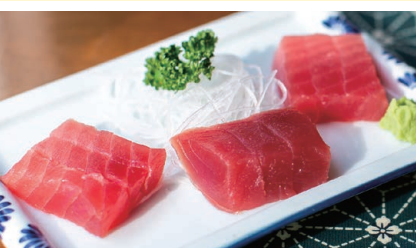
Oden prepared with soup stock cooked for 20 hours. Delicious food and drinks, nice music enjoyed with the female proprietor. A wonderful night in Katsura.

[Recommended Menu]

Chicken-Paitan (Slow-cooked chicken broth) Oden
Salty gizzard stew
Tuna-Shuto (tuna guts pickled in salt) in cream cheese
Home-made cola/ginger ale

11 Kinoshita Sengyoten

Tsukiji 2-4-10
0735-52-0573



Kinkai fresh tuna sashimi 1,100 yen

(Opening hours) 8:00-17:00
(Closed) Irregular
(Parking) 10 vehicles



Offers fresh seafood from the restaurant's own tank, including fresh tuna and lobsters (ise-ebi) taken from the surrounding seas. We can provide a tuna rice bowl. We can deliver souvenirs anywhere in Japan.

[Recommended menu]

Raw tuna rice bowl 1,320 yen
Three types of kept alive are baked (turban shells, noble scallops, and clams) 1,100 yen
Lobster (ise-ebi) dishes 3,850 yen

12 Toyotei

Tsukiji 3-3-1
0735-52-5248



Homemade tuna sandwich 950yen

With coffee or tea 1,200yen
(Opening hours) 8:00-19:00
(Closed) Thurs (Parking) 3 vehicles



The tuna sandwich is a homemade offering from our restaurant. Fresh tuna is used and flaked with aromatic vegetables and bay leaves.

[Recommended menu]

Curry & rice with fried tuna on top 950 yen
Homemade chiffon cake with coffee or tea 950 yen

13 Maguro Zanmai Nachi

Tsukiji 2-3-10
0735-52-1046



Magurozukushi Set 2,000 yen

(Opening hours) 11:00-20:00 (last order 19:30)
(Closed) Irregular
(Parking) 7 vehicles



Offerings include fresh raw tuna sashimi, rice bowls, creative dishes, Kumano beef, whale, and many other Nanki specialties.

[Recommended menu]

Negitoro rice bowl and fired tuna set 2,000 yen
Kumano beef yakiniku set 2,300 yen
Raw whitebait 700 yen
Whale ham 700 yen

14 Morimotoya

Katsura 451
0735-52-4578



Mini set (tuna rice bowl and soba noodles) 1,600 yen

(Opening hours) 11:00-14:00
(Closed) Tuesday
(Parking) 5 vehicles



Enjoy a set meal containing fresh tuna caught in the Katsura port and Juwari soba noodles (100% buckwheat noodles).

[Recommended menu]

Tenzaru soba noodles 1,600 yen
Tuna rice bowl 1,300 yen

15 Steak House Hinoki

Tsukiji 1-1-13
0735-52-5550



Half & Half Lunch 1,650 yen

(Opening hours) 11:30-14:00 17:00-20:00
(Closed) Monday (Parking) 5 vehicles



Founded in 1972, it has inherited the taste and techniques of the first generation. The company has been well received by a wide range of overseas customers and now has stores in 30 countries.

[Recommended menu]

Hamburger steak lunch 1,980 yen
Set for 2 people from 8,800 yen

16 Chinese Restaurant Matenro

Tsukiji 1-1-14
0735-52-0099



Tuna ramen noodles 900 yen

(Opening hours) 11:30-14:00 17:00-21:00
(Closed) Tuesday
(Parking) 5 vehicles



Aiming for authentic Chinese cuisine. Tuna can be a delicious ingredient in Chinese food, too. Shark fin dishes are also good!

[Recommended menu]

Shiba shrimp in Chili sauce 1,300 yen
Gyoza dumplings (six) 450 yen
Crab and lettuce fried rice 950 yen

17 Chinese Restaurant Taishokaku

Katsura 398-1
0735-52-0310



Stone-grilled bibimbap with tuna 1,600 yen

(Opening hours) 11:00-13:40 17:00-20:30
(Closed) Irregular
(Parking) 7 vehicles



A set meal offer consisting of a Stone-grilled bibimbap with lavish quantities of sashimi with tuna caught in Katsura Port.

[Recommended menu]

Tuna in chili sauce 1,500 yen
Sashimi set 1,600 yen



18
Katsuragi

Katsuura 3 9 8 - 11
0735-52-1845




Sashimi - deep-fried dish - teppan grill - tuna soup or hot pot. Tuna cutting with tuna head (Bookings required)
Won a prize in Nama maguro cooking competition.
[Recommended menu]
Tuna kamayaki with salt 1,000 yen
Nachi cutlet rice bowl 1,200 yen

Tuna set (Tuna kamayaki ordered separately) 1,800 yen
(Opening hours) 11:30-14:00 17:00-20:30 (Last order 13:40)
(Closed) Mondays, 4th Sunday of month (open following Monday)
(Parking) 4 vehicles



19
Yagumosushi

Katsuura 3 7 1 - 21
0735-52-3101




We use fresh fish locally caught-fish such as chewy raw tuna.
[Recommended Menu]
The ingredients making up Tokujo-nigiri are different for each season.

Tokujo Nigiri sushi 3,800 yen
(Opening hours) 12:00-13:30 17:30-20:30
(Closed) Thursdays
(Parking) 3 vehicles



20
Obayashi

Tsukiji 2 - 3 - 2 4
0735-52-0691




A special offering featuring sashimi, sushi, kushikatsu, tsukudani(simmered in soy sauce) tuna soup, and other fresh and delicious foods from Katsuura port. Private rooms and banquet rooms are also available.
[Recommended menu]
Tuna cutlet with rice 980 yen
Fresh tuna sashimi set 1,700 yen
Fresh tuna rice bowl 1,500 yen
Whale dishes, eel dishes, etc.

Mankitsu Raw Tuna Gozen 2,300 yen (excl of tax) (up to 20 meals) (requires reservation)
(Opening hours) 11:00-14:00 17:00-21:00
(Closed) Irregular (Parking) 3 vehicles



21
Hirokichi

Katsuura 8 9 - 13
0735-52-6196




A la carte restaurant using seasonal ingredients. Enjoyed for its local delicacies.
[Recommended Menu]
Tuna nigiri sushi (six pieces) 1,000 yen
Various types of whale sashimi

Assortment of 5 kinds of local seafood with tuna 2,000 yen
(Opening hours) 17:00-21:30
(Closed) Tue/Thu (Parking) 5 vehicles



22
Nidaime

Tsukiji 2 - 2 - 6
0735-52-1670




Recommended for those who want to enjoy both meharizushi and tuna rice bowl!! Includes tuna, pork, and onion on a skewer.
[Recommended Menu]
Tuna set meal 1,200 yen
Meharizushi(Rice ball wrapped in pickled Takana mustard leaves) set meal 1,200 yen

Nidaime Set meal 1,500 yen
(Opening hours) 11:00-20:00
(Closed) Irregular
(Parking) 3 vehicles



23
Ichiba Gohan Shige

Tsukiji 7 - 1 2
within Katsuura port Nigiwai ichiba market
0735-29-3500




Fresh fish is personally auctioned off by the owner every morning, and, as a wholesaler, is able to offer freshness at reasonable prices. The owner is also highly selective about local vegetables and seasonings.
[Recommended menu]
Wholesaler's makanai(meals for employees) rice bowl 1,500 yen
Various set meals 1,000 yen~

Katsuura Tabetsukushi Set 1,980 yen
(Opening hours) 8:00-16:00 (last order 15:30)
(Closed) Tue (open when busy)
(Parking) Available



24
Maguro no Wakiguchi

Tsukiji 7 - 1 2
within Katsuura port Nigiwai ichiba market
0735-29-3500




Raw tuna rice bowl with ingredients selected by expert chefs! Sashimi of your choice on the spot is also available. You can also order the sashimi set meal for only +300 yen.
[Recommended Menu]
"Wakiguchi" tuna rice bowl 2,500 yen
"Wakiguchi" breakfast 500 yen

Ganso mochi tuna(The original chewy tuna) rice bowl 2,600 yen
(Opening hours) 8:00-16:00 (last order 15:30)
(Closed) Tuesdays (Parking) Available



25
Maruguro

Tsukiji 7 - 1 2
within Katsuura port Nigiwai ichiba market
0735-29-3500




Offers the highest quality tuna, including the best lean tuna, the "Ganso Mochi Tuna (the original soft and springy tuna)", at the price set for the region where it was produced.
[Recommended menu]
Ganso mochi tuna (two pieces for 510 yen)
Whale sashimi (two pieces for 500 yen)

Honmaguro Ootoro(Fatty tuna) 2 pieces 1,020 yen
(Opening hours) 8:00-16:00 (last order: 15:30)
(Closed) Tuesdays
(Parking) Available



26
Tairyo

Kitahama 3 - 5 6
0735-52-2388




Dishes are made to order for each customer and the restaurant acts as a source of local information where local people tend to gather.
[Recommended Menu]
Fried somen noodles 900 yen
Homemade croquettes 800 yen

Tuna and Natto Rice Bowl (evening only) 1,400 yen
(Opening hours) 11:00-14:00, 17:00-21:00
(Closed) Sun/Mon
(Parking) 3 vehicles

27
Yamato

Tsukiji 8 - 6 - 6
0735-52-5738




You are sure to enjoy the fresh natural raw tuna carefully selected by the owner!
[Recommended Menu]
Yamato DX Rice bowl: 2,500 yen
Tuna Yukhoe-rice bowl: 1,300 yen

Exquisite & Special Yamato Rice Bowl 2,000 yen
(Opening hours) 11:00-15:30 (last order)
(Closed) Thu/3rd Wed of the month
(Parking) 4 vehicles



28
Maguro Toya (Kinoshita Marine Products)

Tsukiji 8 - 6 - 5
0735-52-0071




A restaurant, directly managed by a tuna wholesaler, that specializes in tuna rice bowls. You will enjoy the refined taste, sweetness, and unique chewy texture of fresh natural tuna.
[Recommended Menu]
Chewy raw tuna two-colored rice bowl 1,200 yen
Chewy raw albacore tuna rice bowl 980 yen

Chewy fresh tuna rice bowl 1,450 yen
(Opening hours) 11:00-14:00
(Closed) Tuesdays
(Parking) 5 vehicles



29
Kumano no Mezame

Asahi 3 - 3 4
070-8912-1367




As the tuna set includes raw tuna and the king of tunas(Pacific bluefin tuna), you are unlikely to get tired of eating it.
[Recommended Menu]
Special tuna set of the day 2,750 yen
Seasonal vegetable tempura set 1,210 yen
Korean-style Kumano beef yakiniku set 1,540yen

Tuna Set of the Day 1,870 yen
(Opening hours) 11:00-14:00 17:00-21:00
(Closed) Tue/Mon
(Parking) 7 vehicles.



30
Hanano

Tenma 8 4 4 - 3
0735-52-0507




Creative dishes using only the freshest tuna. Reasonable and delicious with a authentic flavor.
[Recommended Menu]
Jumbo shrimp tempura rice bowl 1,500 yen
Lobster(ise-ebi) tempura rice bowl 2,500 yen
Chef's choice(Omakase) 1,800 yen (excl. of tax)

Tuna rice bowl 1,500 yen (excl. of tax)
(Opening hours) 11:00-14:00 17:00-22:00
(Closed) Tuesdays
(Parking) 8 vehicles.



31
Yuya

Asahi 2 - 2 4 8
0735-52-5577




Boasts many local customers and offers a wide variety of food and beverage menus.
[Recommended menu items]
Grilled tuna with cheese, whale sashimi, homemade roast beef

Tuna 3-piece nigiri sushi 750 yen
(Opening hours) 17:30-22:00 (last order 21:30)
(Closed) Mon/Tue
(Parking) 8 vehicles.



32
Gosaku

Tenma 6 9 7 - 1
0735-52-3878




Nothing is more important than the customer's smile. That is why we do business.
[Recommended Menu]
Four kinds of appetizers chosen by the chef 600 yen (excl. of tax)

Sashimi for two 3,000 yen (excl. of tax)
(Opening hours) 17:00-22:00 (last order 21:00)
(Closed) Sun/Mon
(Parking) 10 vehicles.



33
Kaihami

Nachisan 7 1 2
0735-55-0313




We have created a tuna rice bowl that uses the most delicious ingredients in their most delicious state. The fresh tuna bowl served at the foot of Japan's largest waterfall is exceptional.
[Recommended Menu]
Kumano soba noodles, raw tuna and mehari (Rice ball wrapped in pickled Takana mustard leaves) set 1,500 yen,
Kamonanban(Soba noodles in a hot soup with duck and green onions) 1,400 yen

Fresh tuna rice bowl zukushizen 1,900 yen
(Opening hours) 11:00-15:00
(Closed) Irregular
(Parking) 13 vehicles



34
cafe codou

Ichinono 3 0 0 9 - 5
080-1411-3583




In an effort to keep the prices low, a lunch menu is provided and the cakes are home made.
[Recommended menu]
Toasted sandwich (with drink) 950 yen
Chicken Cutlet Nanban(marinated chicken cutlet with tartar sauce) (with drink) 950 yen

Tuna and onion rice bowl 950 yen
(Opening hours) 11:30-17:00
(Closed) Mon/Tue (open on national holidays)
(Parking) 12 vehicles.



35
Nachi Nebokedo

Ichinono 3 4 3 4 - 1
0735-55-0031




In addition to the restaurant, noodles such as udon, soba, and ramen noodles are provided in a separate building.
[Recommended menu]
Tuna rice bowl (Double portion of tuna) 1,850 yen
Tuna rice bowl 1,350 yen

Tuna rice bowl (Triple portion of tuna) 2,200 yen
(Opening hours) weekdays11:00~15:00 Sat/Sun/Holidays 9:00~15:00
(Closed) Irregular
(Parking) 50 automobiles 15 buses



36
Grill Ikki

Ichinono 3 3 9 2 - 1 0 7
0735-30-1896




A small restaurant located at the foot of Mt. Nachi. Serves both Japanese and Western food.
[Recommended menu]
Kumano beef yakiniku set 1,950 yen
Kumano beef stone-grilled bibimpap 1,850 yen
Kumano beef steak set 3,580 yen

Fresh tuna rice bowl 1,780 yen
(Opening hours) 11:00-14:00 (last order 13:30)
(Closed) Mon/irregular
(Parking) 8 vehicles



37
Kyukamura Nanki-Katsuura

Ugui 7 1 9
0735-54-0126




Enjoy a panoramic view of the Kumano Sea from the tip of the Ugui Peninsula. Onsen is also available for day-trippers.
[Recommended menu]
Pickled tuna rice bowl with mini-udon noodles 1,650 yen
Sashimi set 1,650 yen

Tuna cutlet set 1,430 yen
(Opening hours) 11:30-13:30 (last order 13:30) on weekends
(Closed) Weekdays
(Parking) 55 vehicles



Tuna Map

Shop information TUNA FISH

SHOP INFORMATION



1 Kitagori Shoten

Tenma 133-1
0735-52-0826

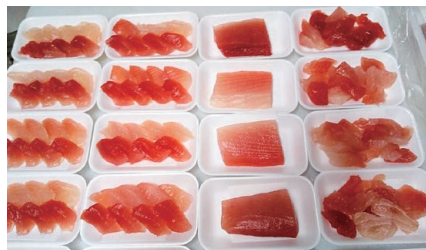


[Recommended menu] Fresh tuna from Katsuura (bigeye, yellowfin, albacore), a variety of fresh sashimi, Mirin-boshi tuna stomach, tuna katsuo tataki(seared), dried pacific saury (limited period only)

(Opening hours) 9:00-18:00 (Closed) Sun (may be open on consecutive holidays. Call us to confirm) (Parking) 4 vehicles

2 Tanaka Shoten

Asahi 1-173-3
090-6371-9937



Selling tuna under the motto of being inexpensive, fresh, and easy. Head office is in Shingu City.

[Recommended menu] Sashimi, saku(a block of fish fillet), cut-offs, tataki (limited by season) 250 yen, 500 yen

(Open hours) 8:30 - until sold out. (Closed) Irregular (Parking) 3 vehicles

3 Horimoto Shoten

Tsukiji 6-1181-307
0735-52-0636



A store that purchases its fish based on freshness and quality. Be sure to give it a try. Also carries out local delivery.

[Recommended menu] Fresh raw tuna from Katsuura, Variety of homemade dried fish, Glaze-grilled eel (glazed with homemade sauce from local soy sauce)

(Open hours) 9:30-16:00 (Closed) Irregular (Parking) 1 vehicle

4 Katsuura Kaisanbutsu Center

Tsukiji 5-1-1
0735-52-4545



[Recommended menu] Tuna Kakuni(boiled soy-bean sauce) 972 yen, Katsuura-style whale stew 1,080 yen, Ito wakame seaweed 756 yen

(Open hours) 8:30-17:00 (Closed) Open all year (Parking) Large buses 5 vehicles, automobiles 10 vehicles

5 Kinoshita Marine Products Tsukiji 8-6-5
Nama Maguro Self Direct Sales Store 0735-52-0071



Offers carefully selected "chewy raw tuna". Enjoy the taste of natural raw tuna.

[Recommended menu] Fresh, chewy albacore tuna (from 200 yen), sashimi, tataki, cured tuna ham, tuna cut-offs, as well as glutinous raw tuna blocks.

(Open hours) 9:00-15:30 (Closed) Tuesdays (Parking) 5 vehicles



6 Nakatora Shoten

Katsuura 417
0735-52-0252



Store sells freshly caught tuna for sashimi, as well as turban shells, abalone, lobster(iseebi) caught at Katsuura port. Home delivery available.

[Recommended menu] Live lobster(iseebi), live abalone, live turban shell, raw tuna ...at market price

(Open hours) 7:00-18:00 (Closed) Open all year (Parking) 2 vehicles

7 Maguro Ooi

Katsuura 485
0735-52-2780



Carefully selects really fresh tuna from Katsuura port. Delivers nationwide.

[Recommended menu] Fresh raw tuna from Katsuura (Big eye, Yellow fin, Albacore)

(Open hours) 7:00-17:00 (Closed) Irregular (Parking) 2 vehicles

8 Katahara Uoten

Tenma 878-8
0735-52-1065



Deals in high quality natural tuna carefully selected by a wholesaler from Nachikatsuura. Delivers nationwide.

[Recommended menu] Various types of natural raw tuna. Self-service is also available.

(Open hours) 9:00-17:00 (Closed) Irregular (Parking) None



*Not available with self service

Tuna Restaurant & Shop AREA MAP

1

2

3

4

